

**SECOND AMENDMENT TO  
SPECIAL DISTRICT PUBLIC DISCLOSURE DOCUMENT**

**PRAIRIE CENTER METROPOLITAN DISTRICT NO. 1**

As required pursuant to Section 32-1-104.8 of the Colorado Revised Statutes (“**C.R.S.**”), Prairie Center Metropolitan District No. 1 (“**District**”) recorded its Public Disclosure Document on December 23, 2014 in the real property records of Adams County, Colorado at Reception Number 2014000090123, and its First Amendment to Special District Public Disclosure Document on December 29, 2016 at Reception Number 2016000113713 (collectively, the “**Public Disclosure Document**”).

The District has further changed its boundaries pursuant to Section 32-1-401, *et. seq.*, C.R.S. and/or Section 32-1-501, *et. seq.*, C.R.S.

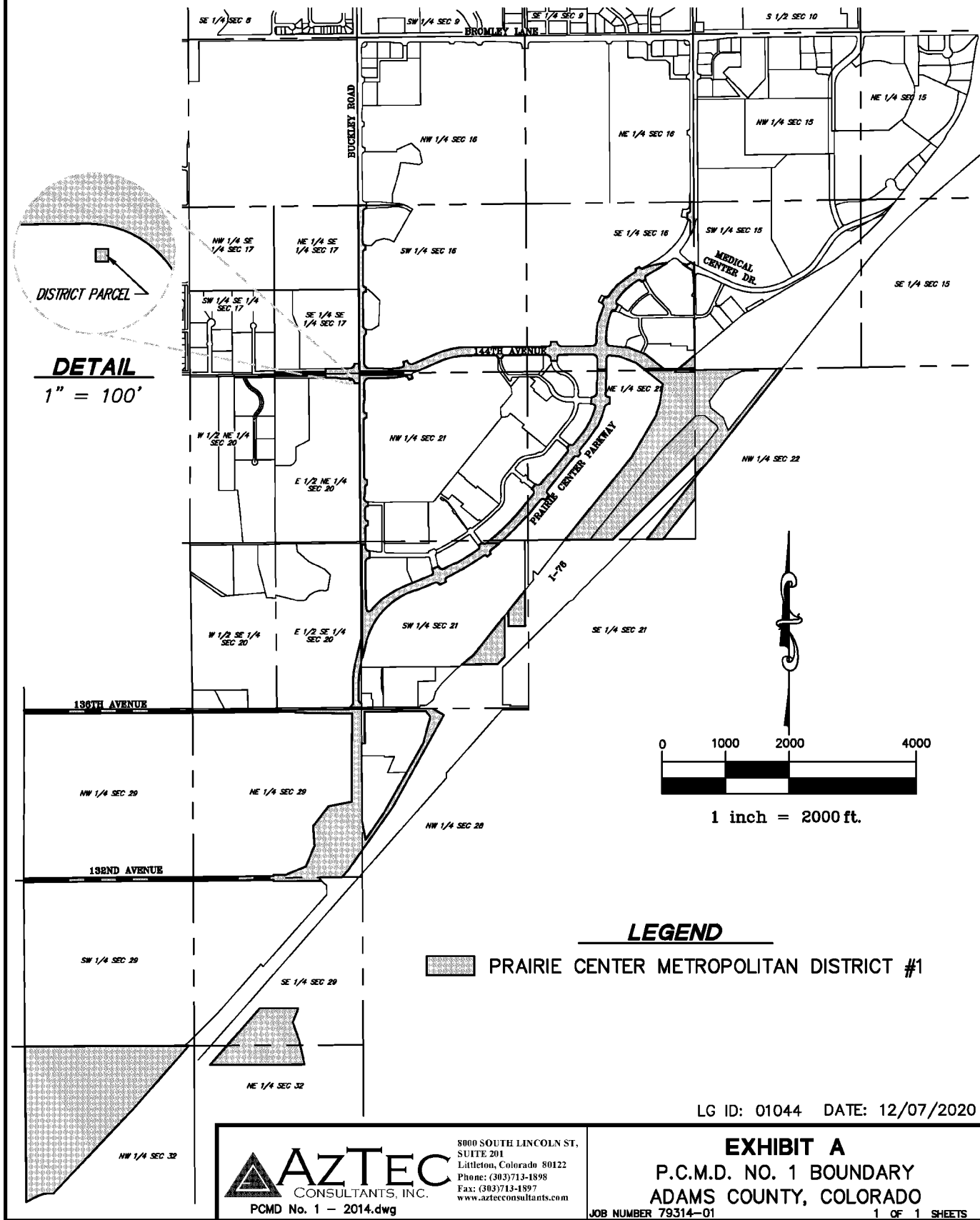
Exhibit A to the Public Disclosure Document is hereby deleted in its entirety, and substituted in lieu thereof shall be **Exhibit 1**, an updated boundary map of the District, attached hereto and incorporated herein.

Dated this 18<sup>th</sup> day of February, 2021.

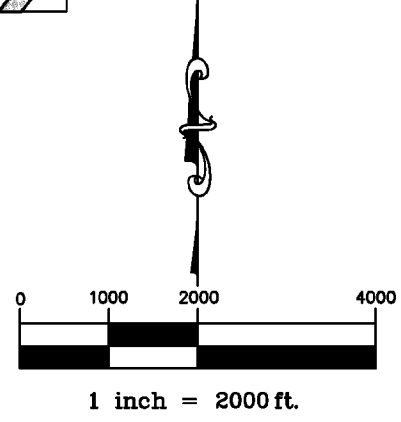
**EXHIBIT 1**

Updated District Map

SECTIONS 16, 17, 20, 21, 22, 28, 29 AND 32, TOWNSHIP 1 SOUTH, RANGE 66 WEST, 6TH PRINCIPAL MERIDIAN  
 COUNTY OF ADAMS, STATE OF COLORADO



**DETAIL**  
 1" = 100'



**LEGEND**  
 PRAIRIE CENTER METROPOLITAN DISTRICT #1

LG ID: 01044 DATE: 12/07/2020

**AZTEC**  
 CONSULTANTS, INC.  
 PCMD No. 1 - 2014.dwg

8000 SOUTH LINCOLN ST.  
 SUITE 201  
 Littleton, Colorado 80122  
 Phone: (303)713-1898  
 Fax: (303)713-1897  
 www.aztecconsultants.com

**EXHIBIT A**  
 P.C.M.D. NO. 1 BOUNDARY  
 ADAMS COUNTY, COLORADO  
 JOB NUMBER 79314-01 1 OF 1 SHEETS