

**FIRST AMENDMENT TO SPECIAL DISTRICT PUBLIC DISCLOSURE DOCUMENT**  
**PRAIRIE CENTER METROPOLITAN DISTRICT NO. 7**

As required pursuant to Section 32-1-104.8 of the Colorado Revised Statutes (“**C.R.S.**”), Prairie Center Metropolitan District No. 7 (“**District**”) recorded its Public Disclosure Document on December 23, 2014 in the real property records of Adams County, Colorado, at Reception Number 2014000090129 (“**Public Disclosure Document**”).

The District has changed its boundaries pursuant to Section 32-1-401, *et. seq.*, C.R.S. and/or Section 32-1-501, *et. seq.*, C.R.S.

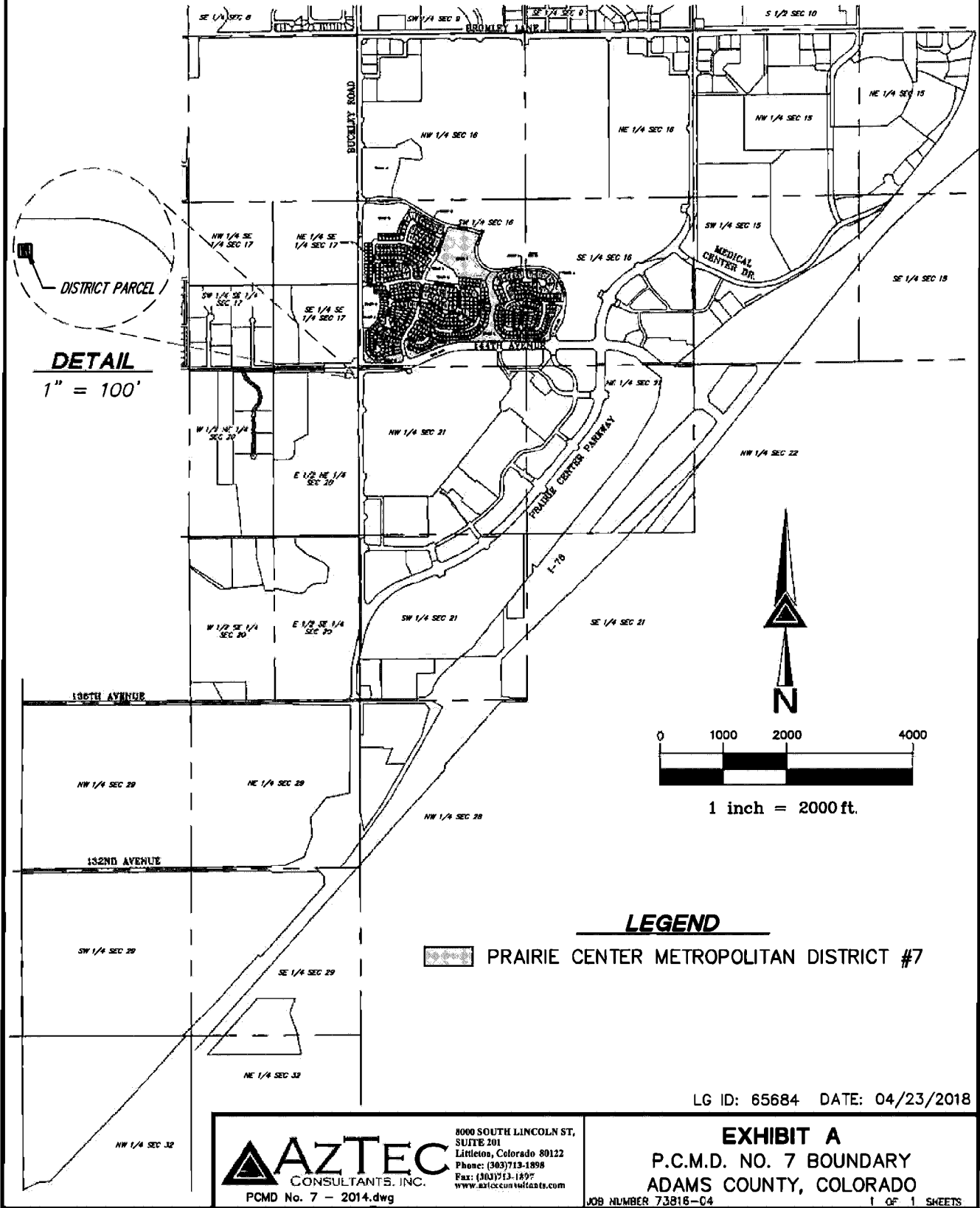
Exhibit A to the Public Disclosure Document is hereby deleted in its entirety, and substituted in lieu thereof shall be Exhibit 1, an updated boundary map of the District, attached hereto and incorporated herein.

Dated this 10<sup>th</sup> day of February, 2020.

**EXHIBIT 1**

Updated District Map

SECTION 20, TOWNSHIP 1 SOUTH, RANGE 66 WEST, 6TH PRINCIPAL MERIDIAN  
COUNTY OF ADAMS, STATE OF COLORADO



LG ID: 65684 DATE: 04/23/2018

**AZTEC**  
CONSULTANTS, INC.  
PCMD No. 7 - 2014.dwg

8000 SOUTH LINCOLN ST,  
SUITE 201  
Littleton, Colorado 80122  
Phone: (303)713-1898  
Fax: (303)713-1897  
www.aztecconsultants.com

**EXHIBIT A**  
P.C.M.D. NO. 7 BOUNDARY  
ADAMS COUNTY, COLORADO

JOB NUMBER 73815-C4 1 OF 1 SHEETS