

SPECIAL DISTRICT PUBLIC DISCLOSURE DOCUMENT

PRAIRIE CENTER METROPOLITAN DISTRICT NO. 3

As required pursuant to Section 32-1-104.8 of the Colorado Revised Statutes (“C.R.S.”), this Public Disclosure Document has been prepared by Prairie Center Metropolitan District No. 3 (the “District”) to provide information regarding the District.

DISTRICT’S POWERS

The powers of the District as authorized by Section 32-1-1004, C.R.S. and under its First Amended and Restated Service Plan, as approved by the City Council of the City of Brighton on November 4, 2008, and as modified by the Non-Material Modification to First Amended and Restated Service Plan effective April 14, 2013, are to plan for, design, finance, acquire, construct, install, relocate, and redevelop certain public improvements as generally described in the Special District Act.

DISTRICT’S SERVICE PLAN

The District’s Service Plan, which can be amended from time to time, includes a description of the District’s powers and authority. A copy of the District’s Service Plan is available from the Division of Local Government in the State Department of Local Affairs (“Division”).

The Prairie Center Metropolitan District No. 3 is authorized by Title 32 of the Colorado Revised Statutes to use a number of methods to raise revenues for capital needs and general operations costs. These methods, subject to the limitations imposed by Section 20 of Article X of the Colorado Constitution (“TABOR”), include issuing debt, levying taxes, and imposing fees and charges. Information concerning District directors, management, meetings, elections, and current taxes are provided annually in the Notice to Electors described in Section 32-1-809(1), C.R.S., which can be found at the District office, on the District’s website, on file at the Division, or on file at the office of the Clerk and Recorder of Adams County.

DISTRICT MAP

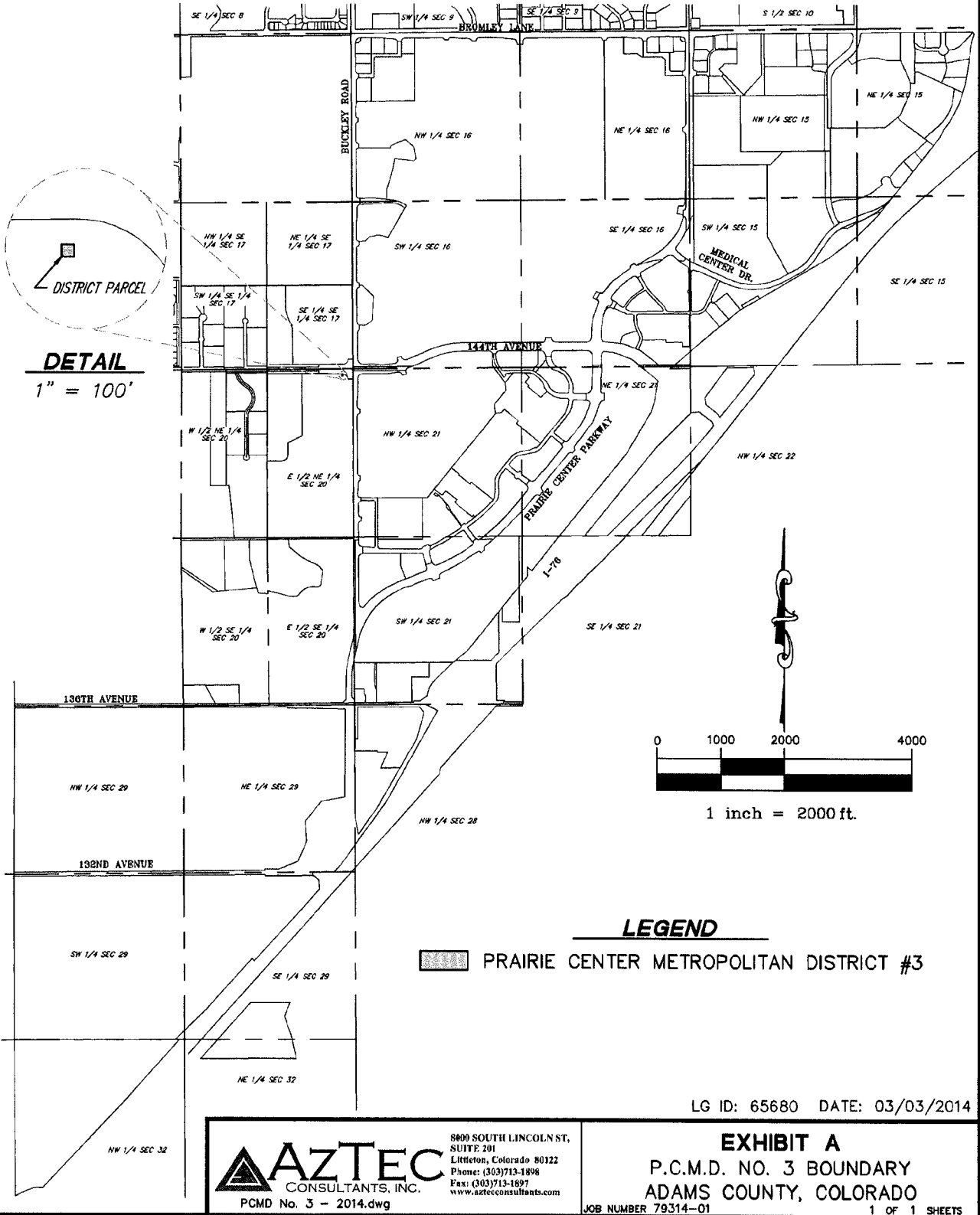
A map of the District’s boundaries is attached hereto as Exhibit A.

Dated this 23rd day of December, 2014.

EXHIBIT A

District Map

SECTION 20, TOWNSHIP 1 SOUTH, RANGE 66 WEST, 6TH PRINCIPAL MERIDIAN
COUNTY OF ADAMS, STATE OF COLORADO



DETAIL
1" = 100'



1 inch = 2000 ft.

LEGEND

 PRAIRIE CENTER METROPOLITAN DISTRICT #3

LG ID: 65680 DATE: 03/03/2014

AZTEC
CONSULTANTS, INC.
PCMD No. 3 - 2014.dwg

8900 SOUTH LINCOLN ST,
SUITE 201
Littleton, Colorado 80122
Phone: (303)713-1898
Fax: (303)713-1897
www.aztecconsultants.com

EXHIBIT A
P.C.M.D. NO. 3 BOUNDARY
ADAMS COUNTY, COLORADO
JOB NUMBER 79314-01 1 OF 1 SHEETS