

FIRST AMENDMENT TO SPECIAL DISTRICT PUBLIC DISCLOSURE DOCUMENT

PRAIRIE CENTER METROPOLITAN DISTRICT NO. 1

As required pursuant to Section 32-1-104.8 of the Colorado Revised Statutes (“**C.R.S.**”), Prairie Center Metropolitan District No. 1 (“**District**”) recorded its Public Disclosure Document on December 23, 2014 in the real property records of Adams County, Colorado at Reception Number 2014000090123 (“**Public Disclosure Document**”).

The District has changed its boundaries pursuant to Section 32-1-401, *et. seq.*, C.R.S. and/or Section 32-1-501, *et. seq.*, C.R.S.

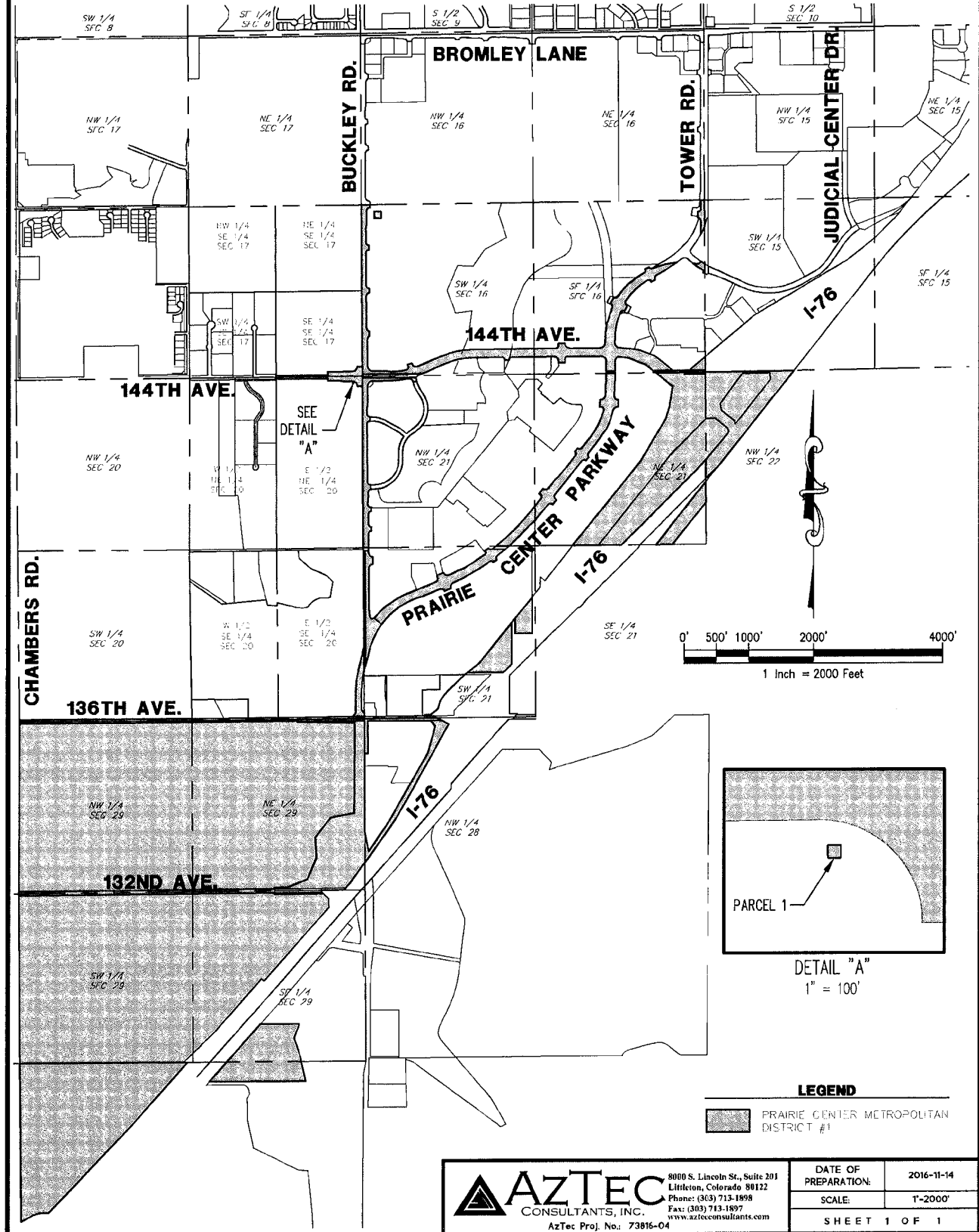
Exhibit A to the Public Disclosure Document is hereby deleted in its entirety, and substituted in lieu thereof shall be **Exhibit 1**, an updated boundary map of the District, attached hereto and incorporated herein.

Dated this 29th day of December, 2016.

EXHIBIT 1

Updated District Map

SECTIONS 16, 17, 20, 21, 22, 28, 29 & 32, T 1 S, R 66 W OF THE SIXTH PRINCIPAL MERIDIAN,
 COUNTY OF ADAMS, STATE OF COLORADO



AZTEC
 CONSULTANTS, INC.
 8000 S. Lincoln St., Suite 203
 Littleton, Colorado 80122
 Phone: (303) 713-1898
 Fax: (303) 713-1897
 www.aztecconsultants.com
 AzTec Proj. No. 73816-04

DATE OF PREPARATION:	2016-11-14
SCALE:	1"=2000'
SHEET 1 OF 1	