

FIRST AMENDMENT TO SPECIAL DISTRICT PUBLIC DISCLOSURE DOCUMENT
PRAIRIE CENTER METROPOLITAN DISTRICT NO. 6

As required pursuant to Section 32-1-104.8 of the Colorado Revised Statutes (“**C.R.S.**”), Prairie Center Metropolitan District No. 6 (“**District**”) recorded its Public Disclosure Document on December 23, 2014 in the real property records of Adams County, Colorado, at Reception Number 2014000090128 (“**Public Disclosure Document**”).

The District has changed its boundaries pursuant to Section 32-1-401, *et. seq.*, C.R.S. and/or Section 32-1-501, *et. seq.*, C.R.S.

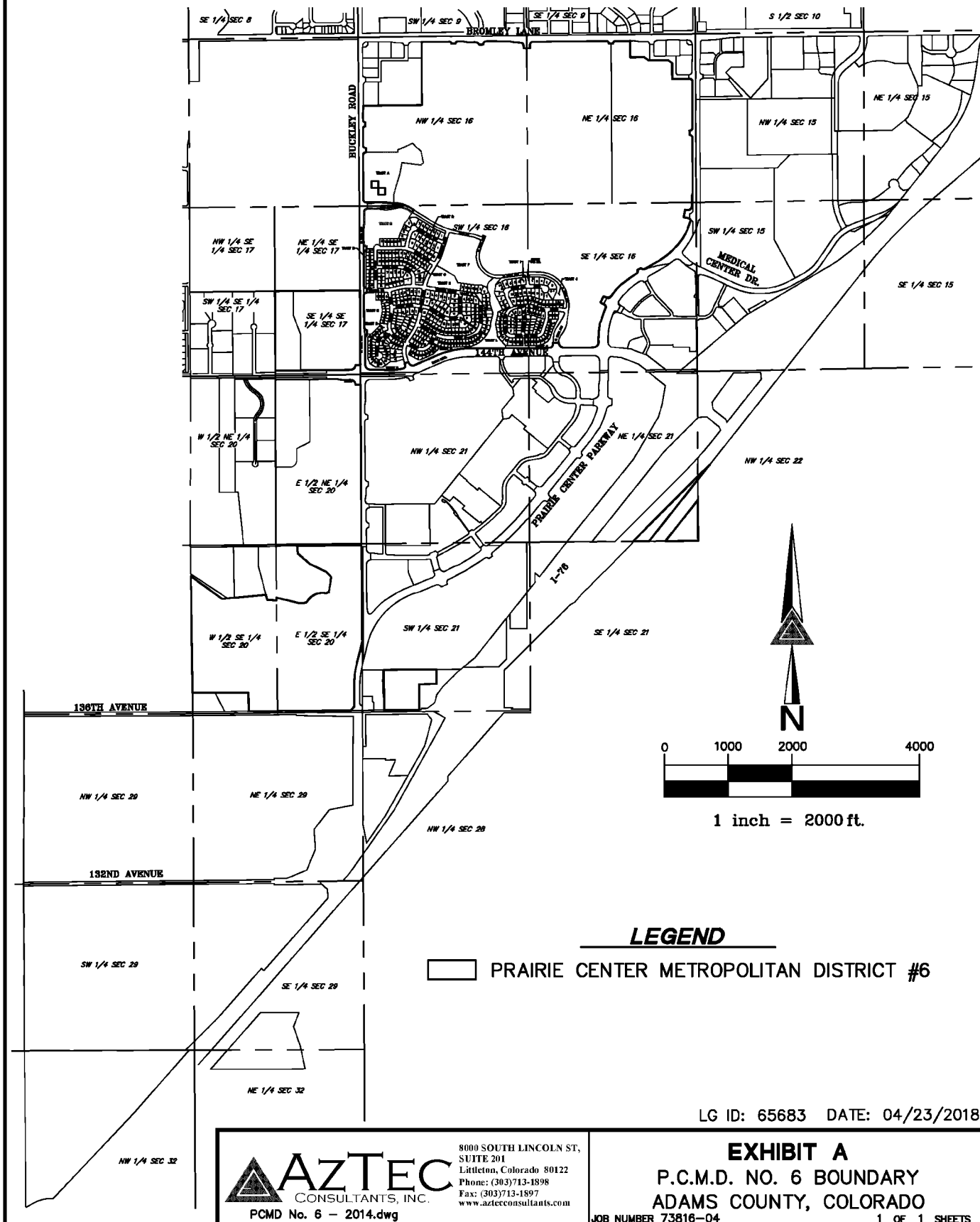
Exhibit A to the Public Disclosure Document is hereby deleted in its entirety, and substituted in lieu thereof shall be **Exhibit 1**, an updated boundary map of the District, attached hereto and incorporated herein.

Dated this 18th day of February, 2021.

EXHIBIT 1

Updated District Map

SECTION 16, 17, 20 AND 21, TOWNSHIP 1 SOUTH, RANGE 66 WEST, 6TH PRINCIPAL MERIDIAN
 COUNTY OF ADAMS, STATE OF COLORADO



LG ID: 65683 DATE: 04/23/2018

AZTEC
 CONSULTANTS, INC.
 8000 SOUTH LINCOLN ST,
 SUITE 201
 Littleton, Colorado 80122
 Phone: (303)713-1898
 Fax: (303)713-1897
 www.aztecconsultants.com

EXHIBIT A
P.C.M.D. NO. 6 BOUNDARY
ADAMS COUNTY, COLORADO
 PCMD No. 6 - 2014.dwg
 JOB NUMBER 73816-04 1 OF 1 SHEETS